



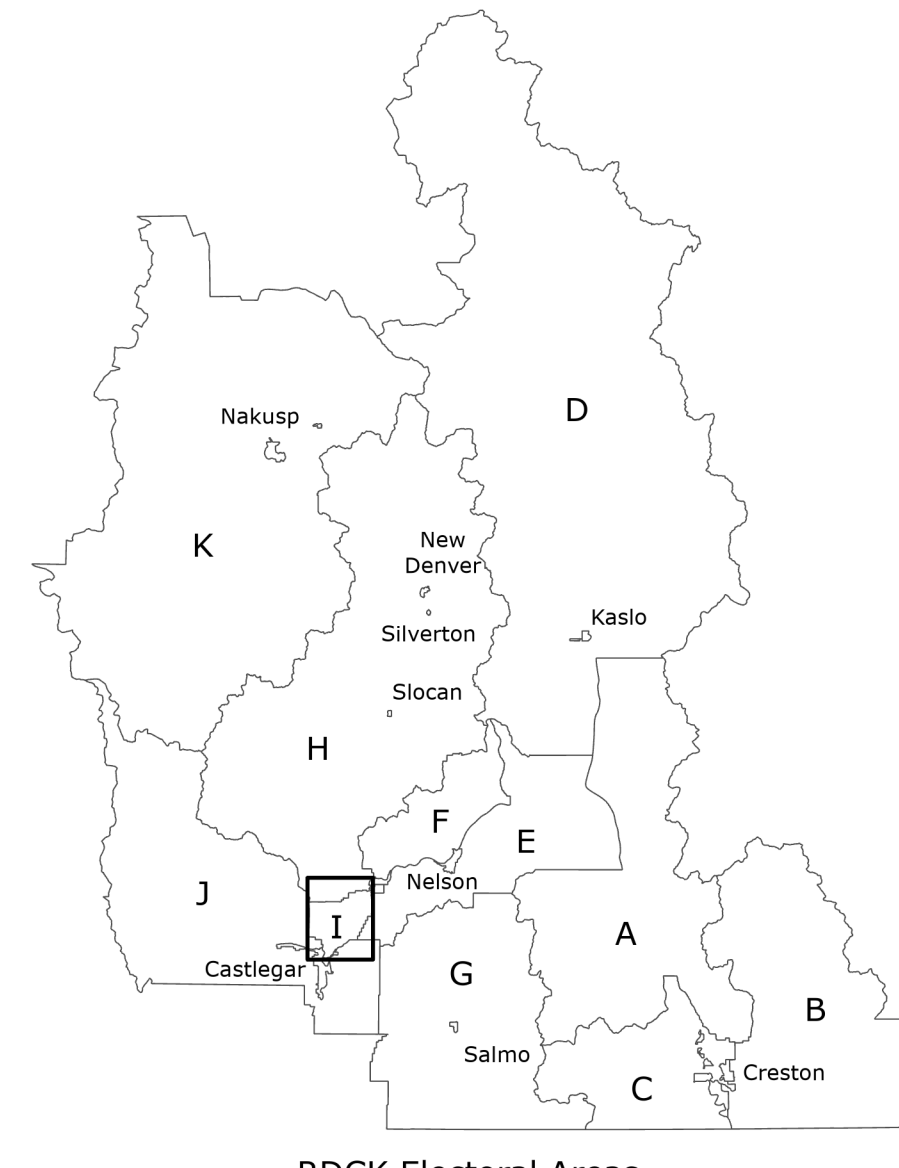
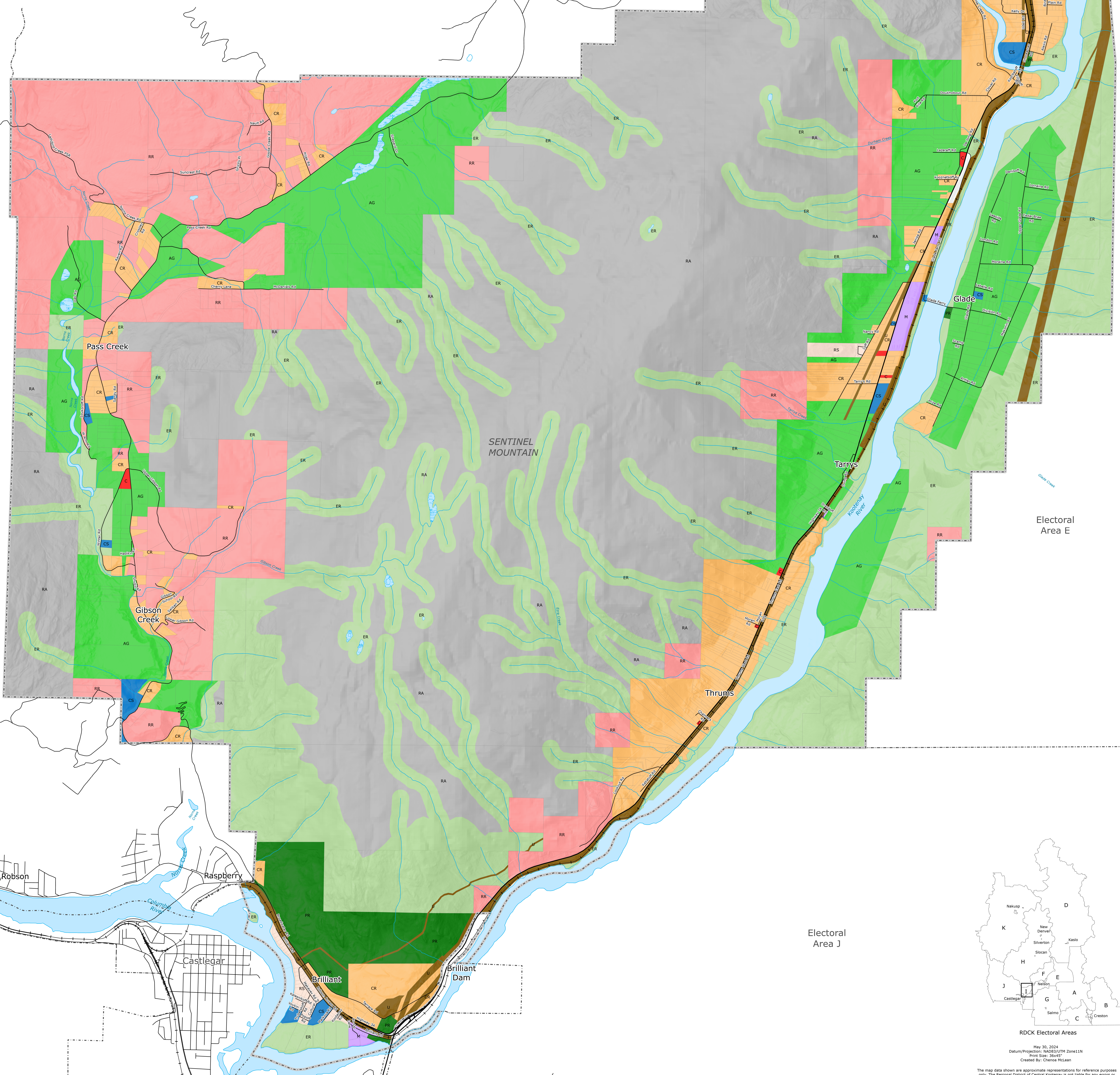
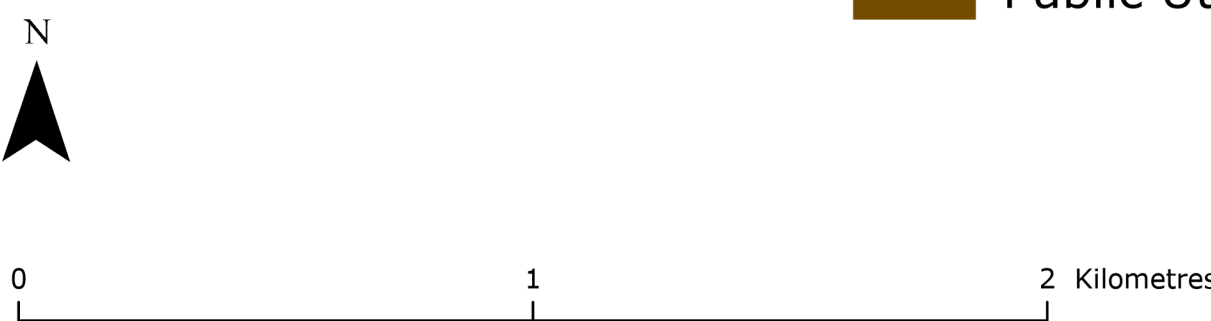
Future Land Use

Schedule A.2 - Area I Official Community Plan
Bylaw No. 2821, 2024

- Electoral Area I
- Electoral Boundary
- Cadastre
- River or Lake
- Wetland
- Stream or Shoreline
- Highway
- Road
- Railway

Future Land Use Designation

- Agricultural (AG)
- Commercial (C)
- Country Residential (CR)
- Community Services (CS)
- Environmental Reserve (ER)
- Industrial (M)
- Parks and Recreation (PR)
- Resource Area (RA)
- Rural Residential (RR)
- Suburban Residential (RS)
- Public Utilities (U)



RDCK Electoral Areas
 May 30, 2024
 Datum/Projection: NAD83/UTM Zone11N
 Print Size: 36x45"
 Created By: Chenoa McLean

The map data shown are approximate representations for reference purposes only. The Regional District of Central Kootenay is not liable for any errors or omissions on this map nor any loss or damage resulting from the use of this map.